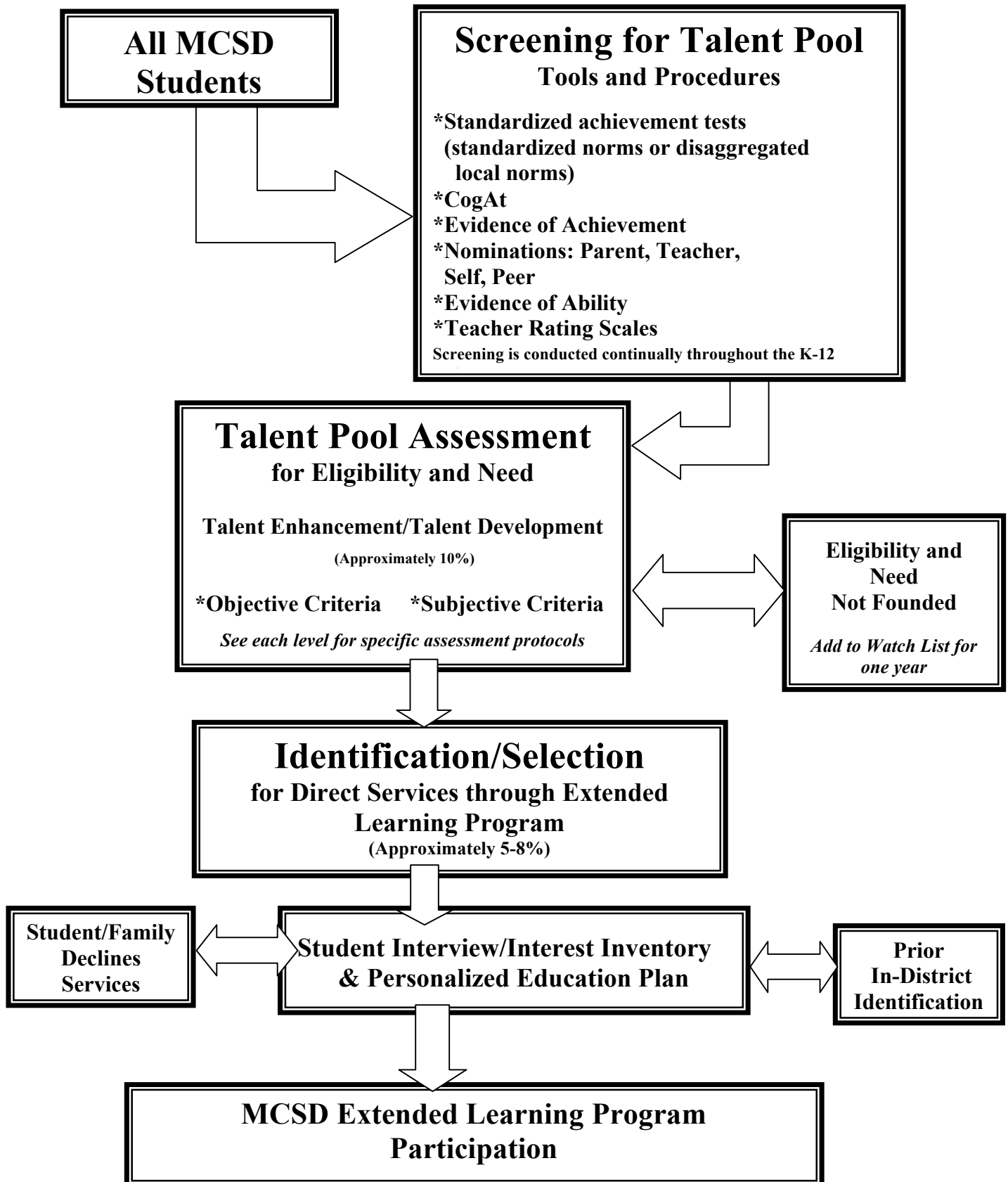


Fig. 1 Marshalltown Community School District Extended Learning Program

Identification Process for ELP Services



Part I. Screening for Talent Pool

All MCSD students are screened to establish a talent pool. Those students placed in the pool represent approximately 10% of the student body and have characteristics indicating they should be considered for possible ELP placement. This pool is established from

OBJECTIVE DATA:

- 1) Evidence of achievement based on MAP (Miller, MHS), Iowa Assessment scores (based standardized norms for talent enhancement; local norms for talent development)
- 2) Evidence of aptitude based on CoGAT test scores (3rd grade)

SUBJECTIVE DATA:

- 1) Teacher nomination/rating
- 2) Self/parent/peer nomination
- 3) Evidence of achievement through performance or portfolio data

Part II. Talent Pool Assessment

Students in the talent pool will then be assessed for eligibility and need. Committees at each level will use both objective and subjective criteria to determine the students whose needs can best be met by ELP placement for talent enhancement or talent development. Approximately 5-8% of students at each grade level will be selected.

Talent enhancement students are selected using national norms. Talent development students are those sub-category students identified through local norms who might not be identified using national standards.

Those students who are not selected for direct services will be placed on a watch list and can always take advantage of the many enrichment activities available through the regular school curriculum and through extracurricular offerings in the school and community. Please consult pgs. 17-20 for assessment procedures used at each level.

Part III. Identification/Selection for Direct Services

Students selected from the talent pool will be interviewed by the ELP coordinator (and consultation from one counselor and one administrator if necessary) for direct services using an interest inventory (Appendix 3) and a Personalized Education Plan (Appendix 4) will be developed. If the student or family declines services, they will be placed back in the talent pool for future assessment of need.